

Leeds Planning Ahead Report (End of Life)

Leeds Health & Care Partnership

2024-25 Report (Q1-Q4) - Leeds Citywide

Data Source : SystmOne and EMIS

Data Provided by : Leeds Community Healthcare, St Gemma's Hospice, Sue Ryder Wheatfields Hospice and Public Health Leeds (Integrated Digital Services)

Report Compiled by : Business Intelligence Team, Leeds Office of the ICB

	Page
Summary	3
Part 1 - GP Practice EoL Data	
C1.1a Patients who died and were included on EPaCCS in Leeds, breakdown by PCN (Part 1 of 2)	4
C1.1b Patients who died and were included on EPaCCS in Leeds, breakdown by PCN (Part 2 of 2)	5
C1.2a Percentage of Patients on EPaCCS who have achieved Preferred Place of Death in Leeds, breakdown by PCN (Part 1 of 2)	6
C1.2b Percentage of Patients on EPaCCS who have achieved Preferred Place of Death in Leeds, breakdown by PCN (Part 2 of 2)	7
Part 2 - Leeds City EoL Data	
C2.1 Total patient deaths in and out of hospital and total deaths by	8
C2.2 Patients who died and were included on EPaCCS	8
C2.3 Preferred place of death recorded	9
C2.4 Actual place of death recorded	9
C2.5 Preferred Place of Death Achieved (First Choice) by patients	10
C2.6 Duration of time (in weeks) the patients were on EPaCCS (Leeds)	11
C2.7 Deceased EPaCCS patients who have ReSPECT (Recommended Summary Plan for Emergency Care and Treatment) Code recorded on the system.	12
C2.9 Percentage of deceased EPaCCS patients with 3 or more Unplanned Admissions (Non-Elective Inpatient) in the last 90 days of their life.	12
C2.10 Unplanned hospital usage (A&E and Non-Elective Admissions) by EPaCCS Patients in the last 90 days of their life.	13

Leeds Planning Ahead Report (End of Life)

The Electronic Palliative Care Coordination System (EPaCCS) is an electronic record that supports advance care planning conversations and improves the coordination of care for people approaching the end of life.

It provides a summary of key recommendations, preferences and information essential to the high quality care for patients with palliative care needs and those choosing to plan ahead, irrespective of prognosis. Local and national data shows that when patients are given the opportunity to discuss and share their preferences they are more likely to achieve their end of life care goals.

This is a 2024-25 (Q1-Q4) Leeds Planning Ahead Report report, combining SystmOne and EMIS data for patients registered from all the practices across Leeds.

To ensure a comprehensive view of advance care planning it collates EPaCCS data entered by all relevant care providers: Leeds Community Healthcare community services, hospice services, community palliative care teams in addition to primary care.

These Leeds Planning Ahead Report (End of Life) reports have been produced to enable you to reflect on end of life care in your practice.

Key findings of the 2024-25 Report (Q1-Q4) report are:

- ◆ **44%** of adults who died in Leeds had an EPaCCS record compared to previous year (45.9%).
(EPaCCS Deaths / All Deaths) 2024/25: Q1 (613/1411), Q2 (619/1354), Q3(672/1590) and Q4 (751/1622)
(EPaCCS Deaths / All Deaths) 2023/24: Q1 (665/1444), Q2 (700/1411), Q3 (732/1574) and Q4 (691/1641)
- ◆ **77%** achieved their preferred place of death in current reporting period compared with the previous year of 80%; with 68.8% dying outside of hospital compared to 70.3% in the previous year.
- ◆ The proportion of patients whose EPaCCS record was started more than 3 month before they died is at 54% in current reporting period compared to 55% the previous year.
- ◆ The proportion of patients **without** an actual place of death recorded in current reporting period is **14%** which is same as previous year.
- ◆ Percentage of patients who died with GSF and also had a RESPECT Code recorded on the system:
2024/25: Q1 (97%), Q2 (95%), Q3 (97%) and Q4 (96%)
2023/24: Q1 (92%), Q2 (91%), Q3 (94%) and Q4 (92%)
- ◆ Deaths at home recorded in the current reporting period :
2024/25: Q1 213 deaths (29%), Q2 191 deaths (31%), Q3 202 deaths (30%) and Q4 207 deaths (28%)
2023/24: Q1 213 deaths (32%), Q2 215 deaths (31%), Q3 210 deaths (29%) and Q4 175 deaths (25%)

Impact of Wheatfield Hospice Closure

The temporary closure of Wheatfield Hospice from mid-August to mid-November 2024 (Q2) coincided with a drop in hospice deaths (from 18% in Q1 to 16% in Q2) and an increase in hospital deaths (from 17% to 22%).

This period also saw the lowest rate of Preferred Place of Death (PPoD) achievement during the year, falling to 73.7%.

St Gemma's Hospice, along with several others outside Leeds, helped to absorb the additional demand and mitigate the overall impact.

The findings show that that a greater proportion of people are being given opportunities to discuss , document and share their care preferences at an earlier stage and demonstrate improved data quality.

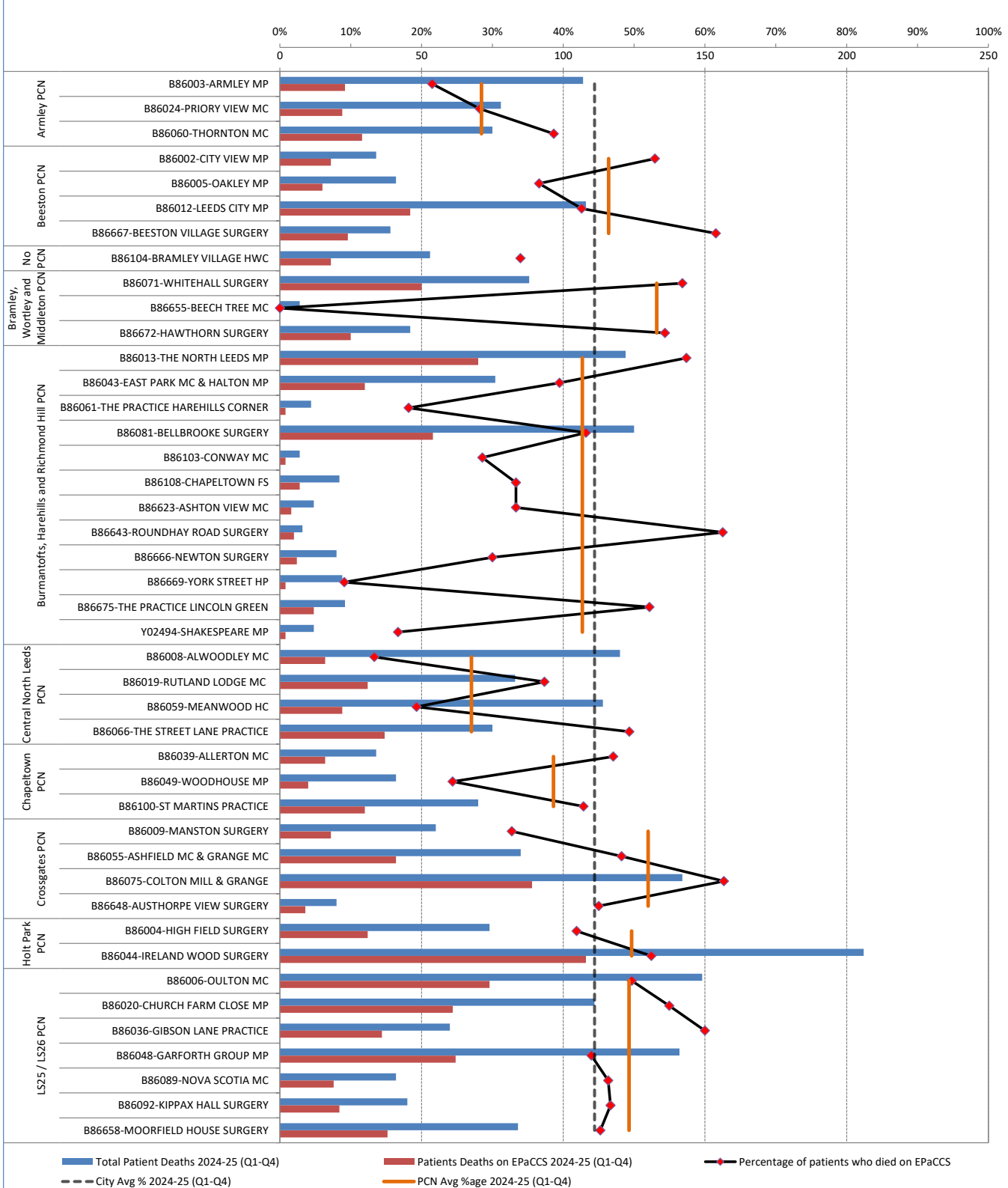
Part 1 - GP Practice EPaCCS Data
2024-25 Report (Q1-Q4)

Leeds Health & Care Partnership

C1.1a Patients who died and were included on EPaCCS in Leeds, breakdown by PCN (Part 1 of 2)

	Q1	Q2	Q3	Q4	Total
a.Number of All patient deaths	1411	1354	1590	1622	5977
b. Number of patients deaths on EPaCCS	613	619	672	751	2655
c. % of patient deaths on EPaCCS	43%	46%	42%	46%	44%

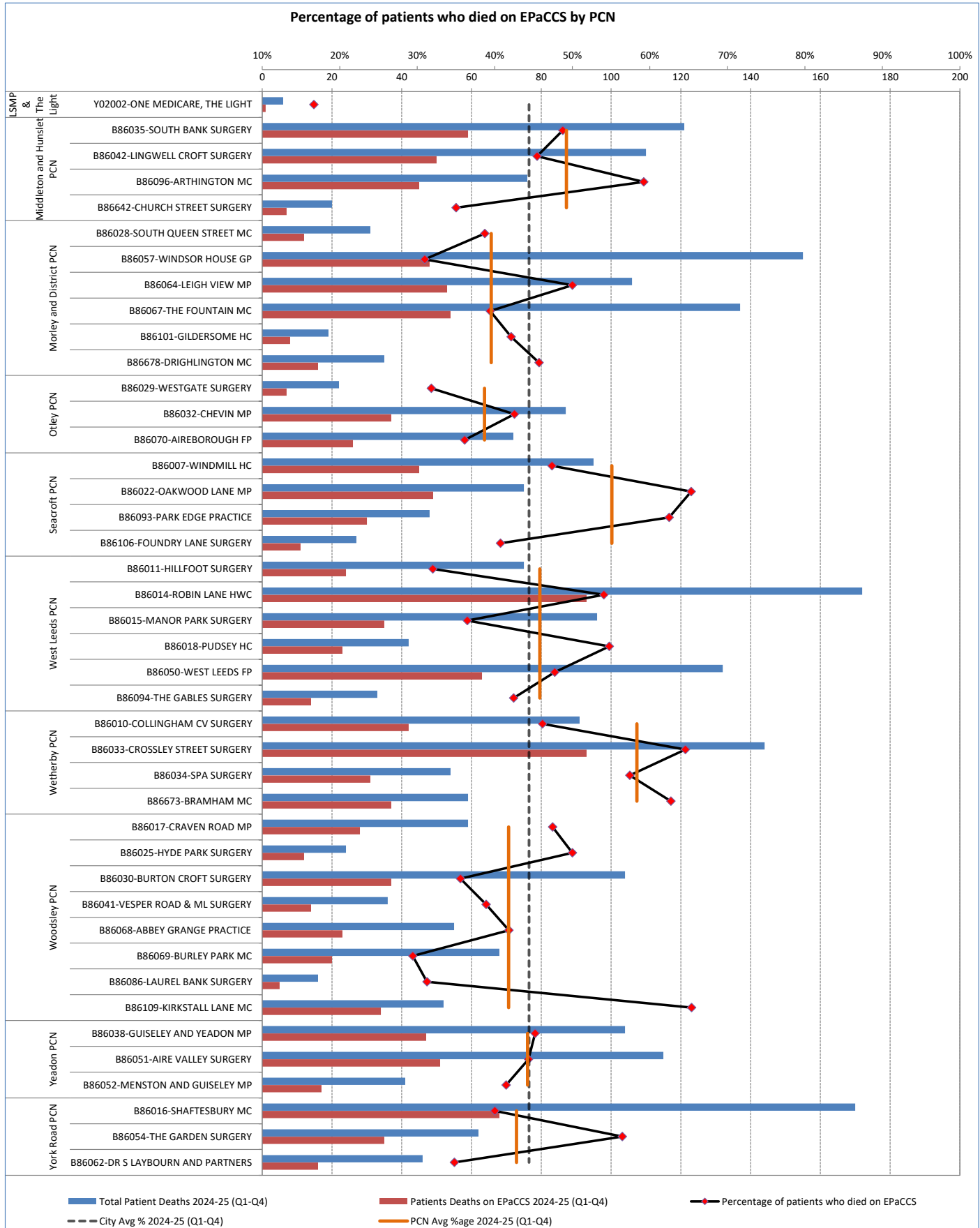
Percentage of patients who died on EPaCCS by PCN



Part 1 - GP Practice EPaCCS Data
2024-25 Report (Q1-Q4)

Leeds Health & Care Partnership

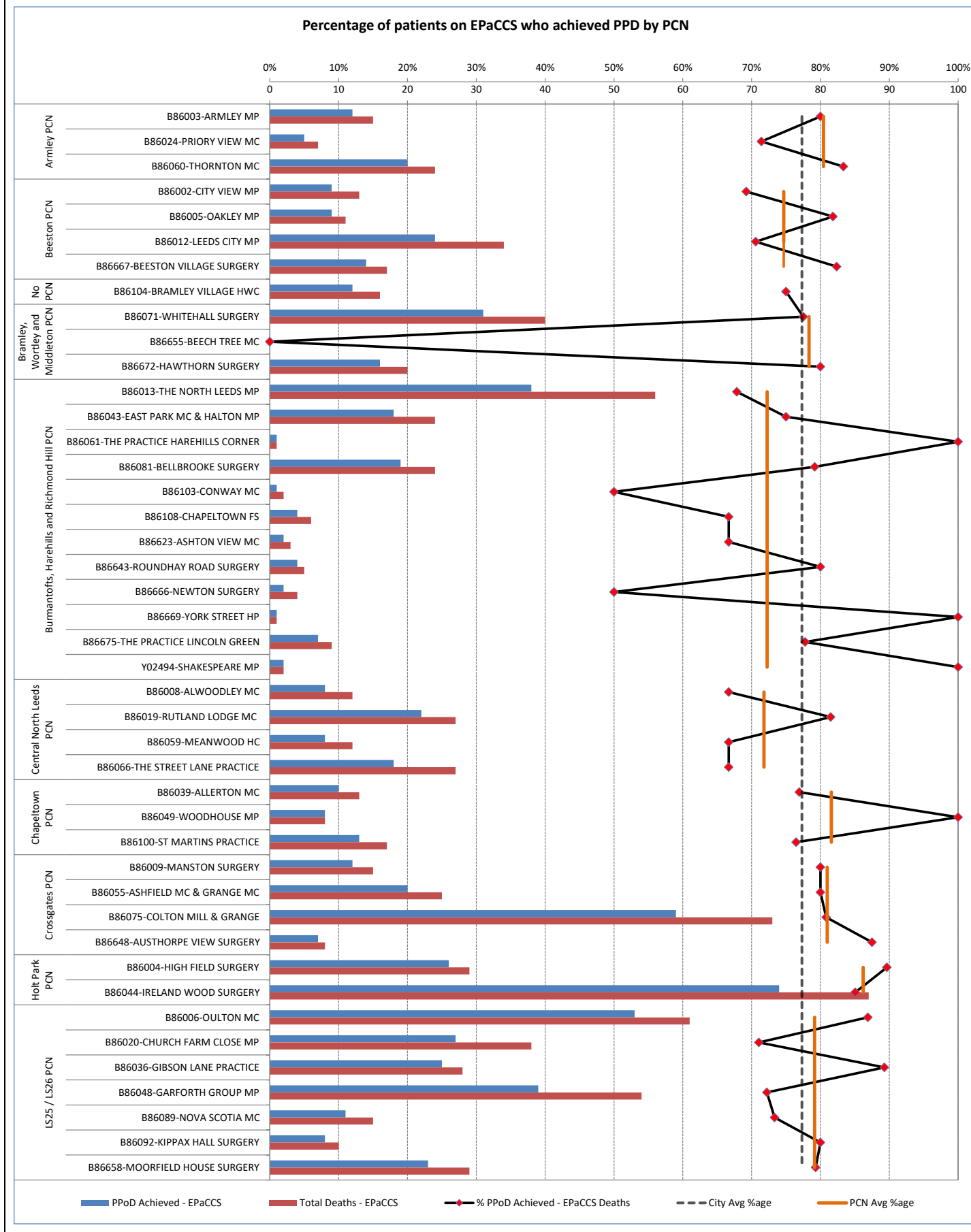
C1.1b Patients who died and were included on EPaCCS in Leeds, breakdown by PCN (Part 2 of 2)



Part 1 - GP Practice EPaCCS Data
2024-25 Report (Q1-Q4)

Leeds Health & Care Partnership

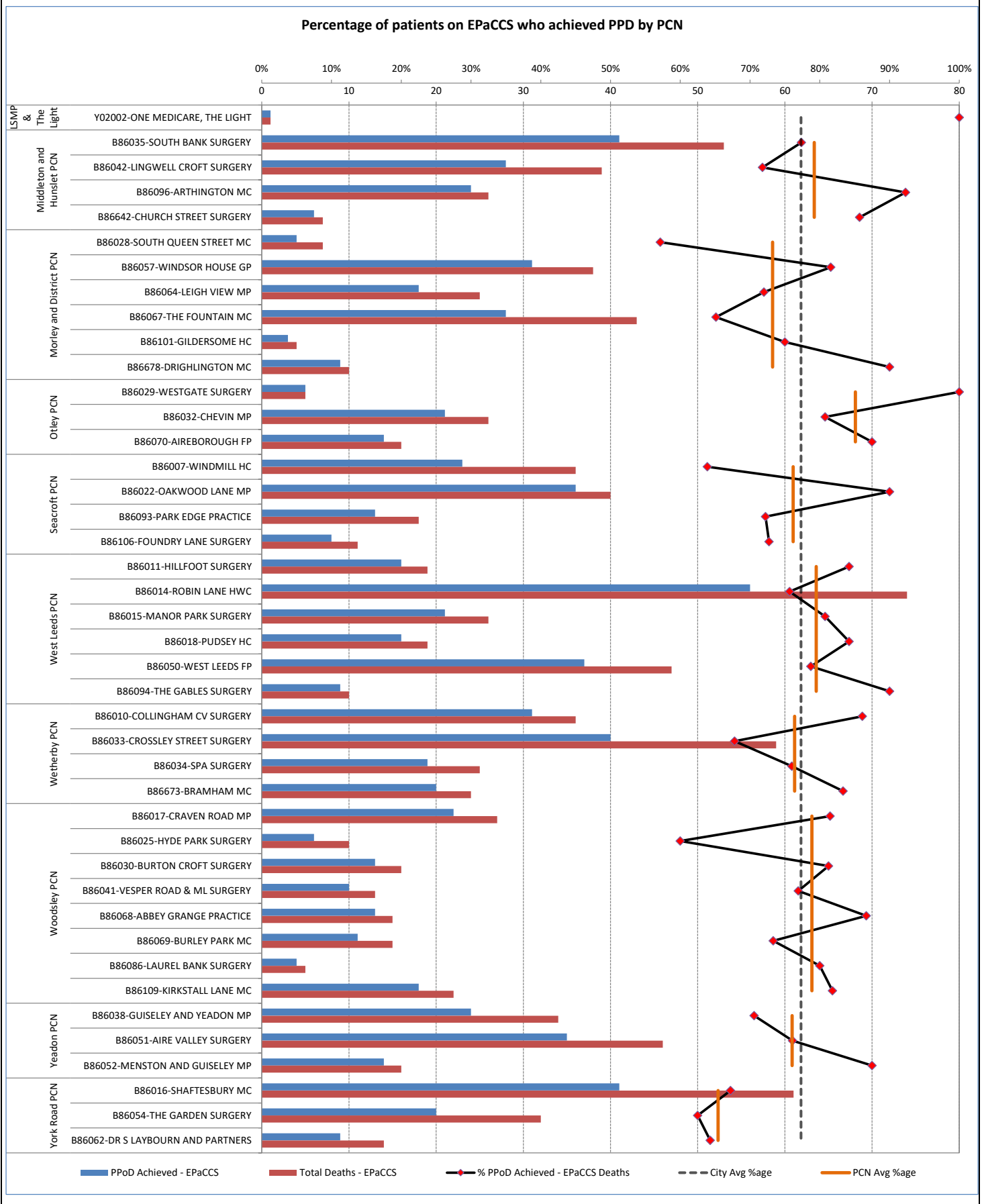
C1.2a Percentage of Patients on EPaCCS who have achieved Preferred Place of Death in Leeds, breakdown by PCN (Part 1 of 2)



Part 1 - GP Practice EPaCCS Data
2024-25 Report (Q1-Q4)

Leeds Health & Care Partnership

C1.2b Percentage of Patients on EPaCCS who have achieved Preferred Place of Death in Leeds, breakdown by PCN (Part 2 of 2)

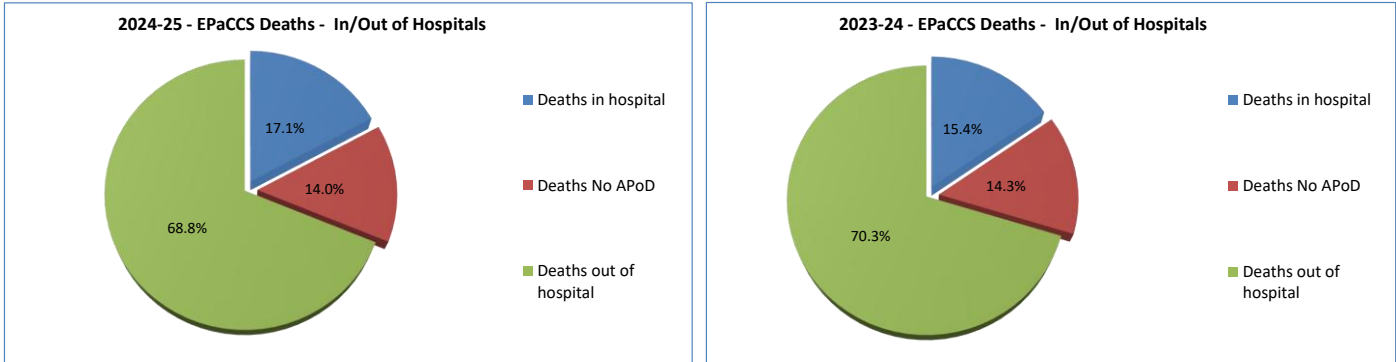


Part 2 - Leeds Health & Care Partnership EoL Data 2024-25 Report (Q1-Q4)

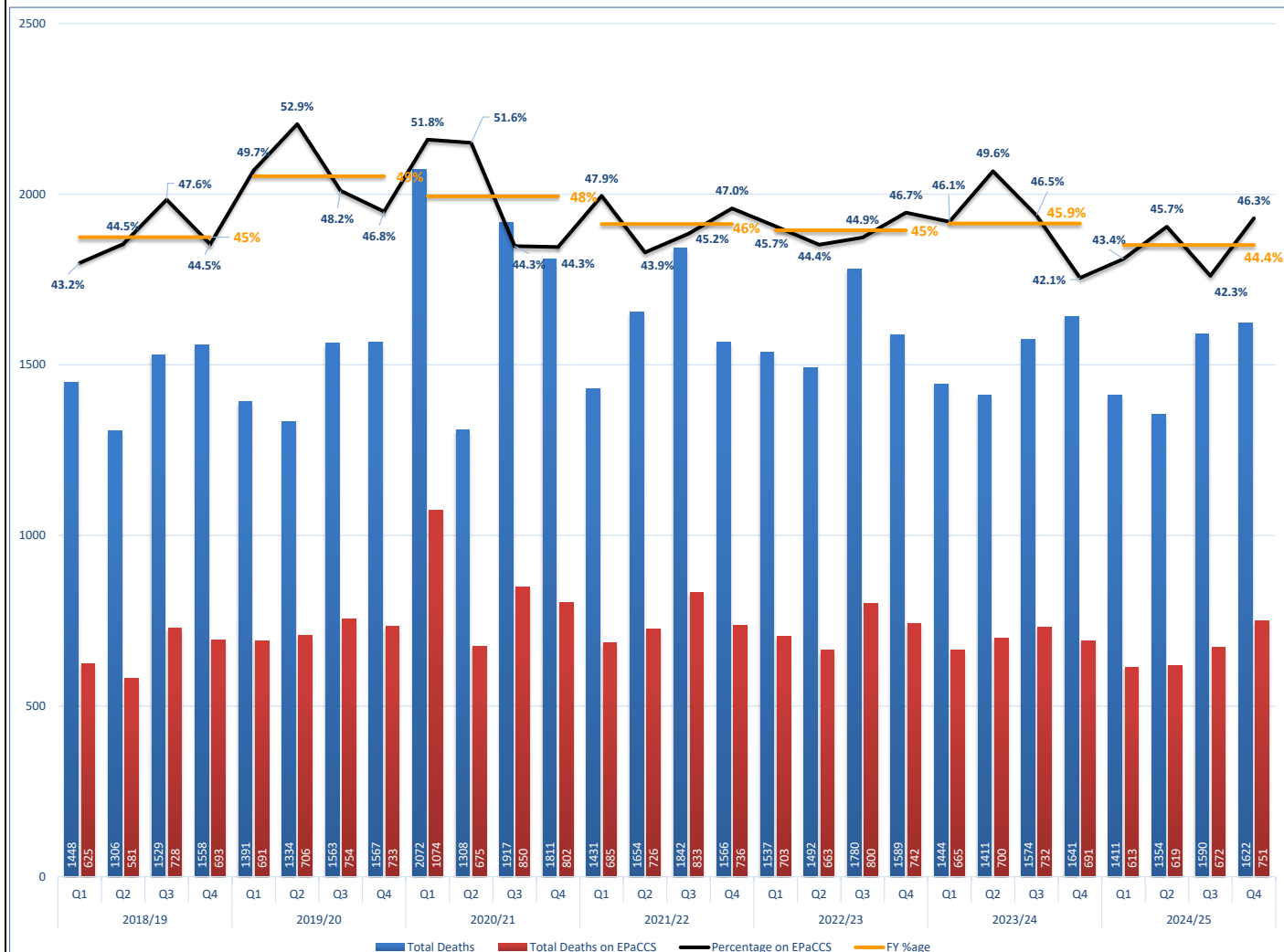
C2.1 Total patient deaths in and out of hospital and total deaths by

	Q1		Q2		Q3		Q4		Total	
1. Total deaths in hospital?	102	17%	135	22%	105	16%	113	15%	455	17%
2. Total deaths out of hospital?	437	71%	421	68%	465	69%	504	67%	1827	69%
3. Total number of deaths with No APoD	74	12%	63	10%	102	15%	134	18%	373	14%
4. Total number of deaths in Leeds	All	EPaCCS	All	EPaCCS	All	EPaCCS	All	EPaCCS	All	EPaCCS
	1411	613	1354	619	1590	672	1622	751	5977	2655

Percentage deaths in hospital / out of hospital for 2024-25 Report (Q1-Q4) compared with previous year.



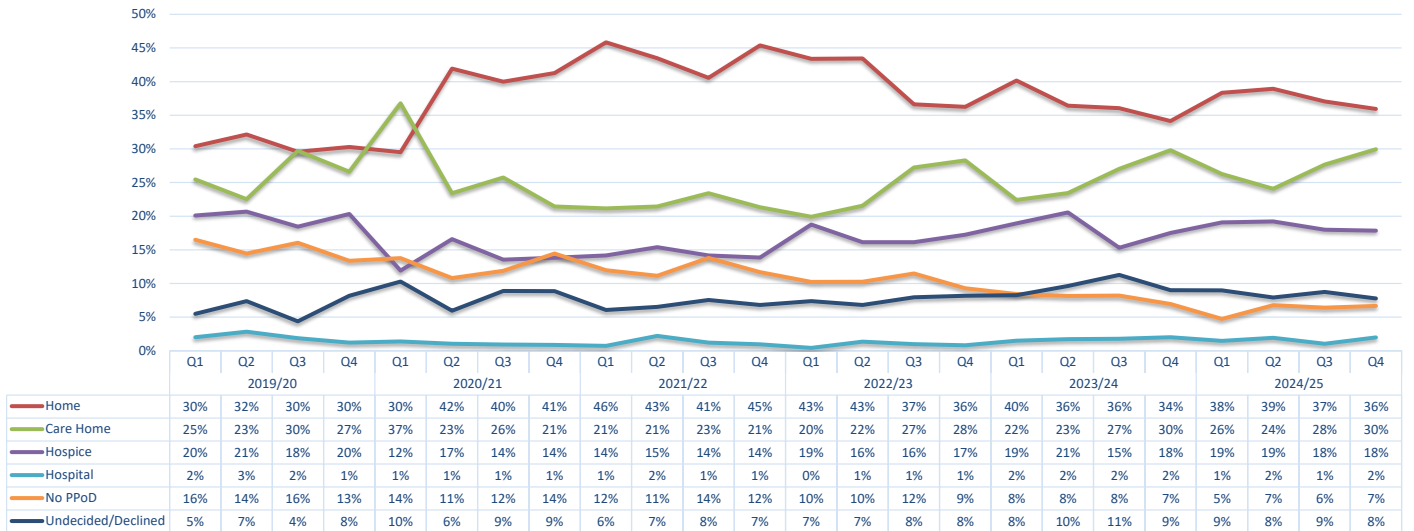
C2.2 Patients who died and were included on EPaCCS



Part 2 - Leeds Health & Care Partnership EoL Data 2024-25 Report (Q1-Q4)

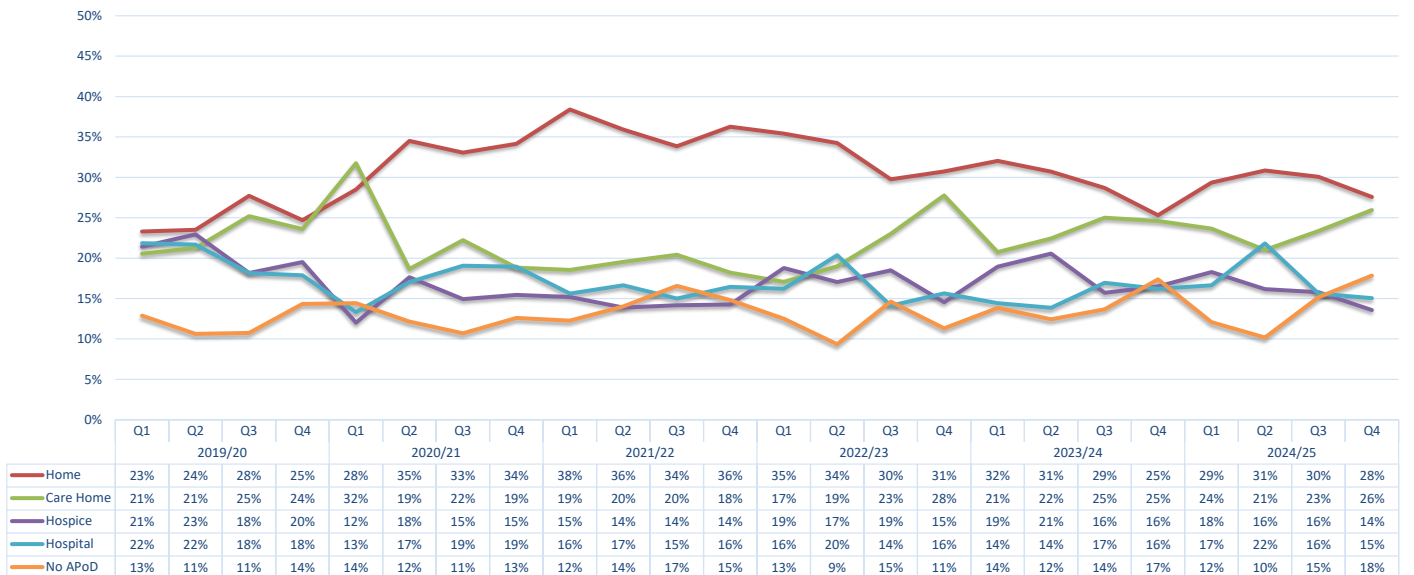
C2.3 Preferred place of death recorded

		Leeds Health & Care Partnership															
	Preferred Place of Death	Q1				Q2				Q3				Q4			
1	Care Home	161				149				186				225			
2	Home	235				241				249				270			
3	Hospice	117				119				121				134			
4	Hospital	9				12				7				15			
5	No PPOD (preferred place of death)	29				42				43				50			
6	Undecided/Declined	62				56				66				57			
	Total	613				619				672				751			



C2.4 Actual place of death recorded

		Leeds Health & Care Partnership															
	Actual Place of Death	Q1				Q2				Q3				Q4			
1	Care Home	145				130				157				195			
2	Home	180				191				202				207			
3	Hospice	112				100				106				102			
4	Hospital	102				135				105				113			
5	No APoD (actual place of death)	74				63				102				134			
6	Other	0				0				0				0			
	Total	613				619				672				751			



Part 2 - Leeds Health & Care Partnership EoL Data

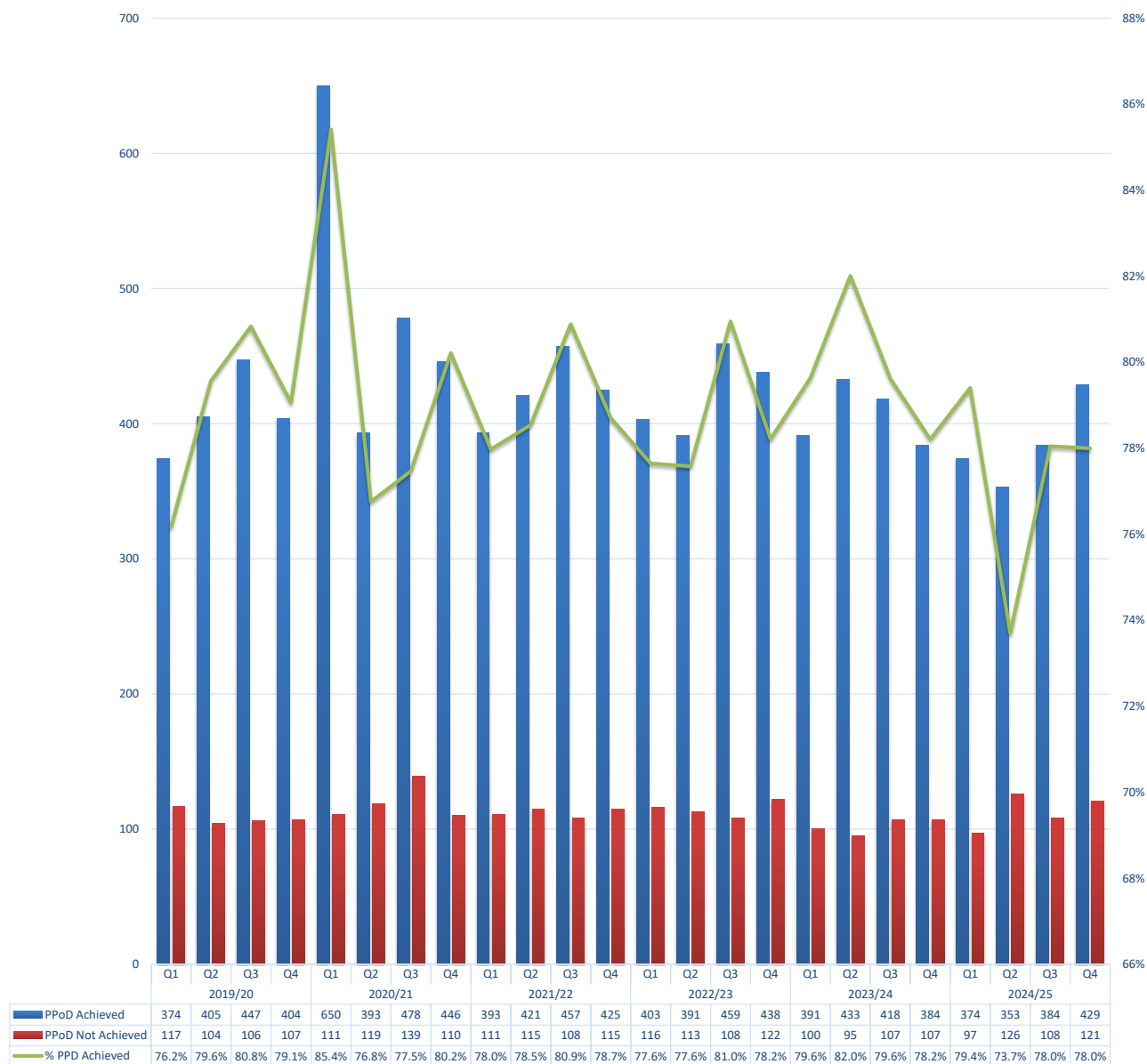
2024-25 Report (Q1-Q4)

C2.5 Preferred Place of Death Achieved (First Choice) by patients

	Qtr	PPoD Achieved	PPoD Not Achieved	% PPD Achieved
Leeds Health & Care Partnership	Q1	374	97	79%
	Q2	353	126	74%
	Q3	384	108	78%
	Q4	429	121	78%
	Total	1540	452	77%

NOTE: Only patients with both PPoD and APoD recorded are included in this analysis

Preferred Place of Death (First Choice) Achieved by patients

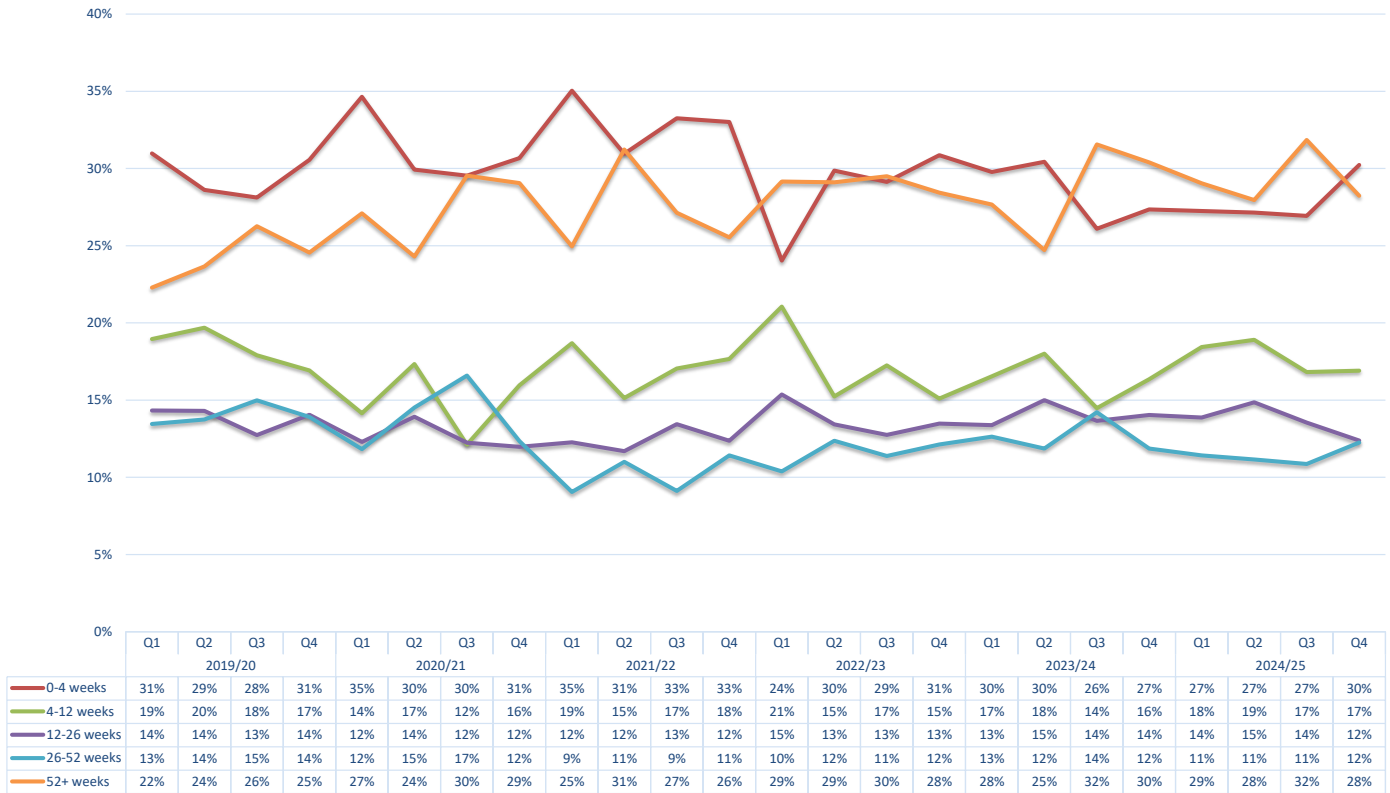


Part 2 - Leeds Health & Care Partnership EoL Data

2024-25 Report (Q1-Q4)

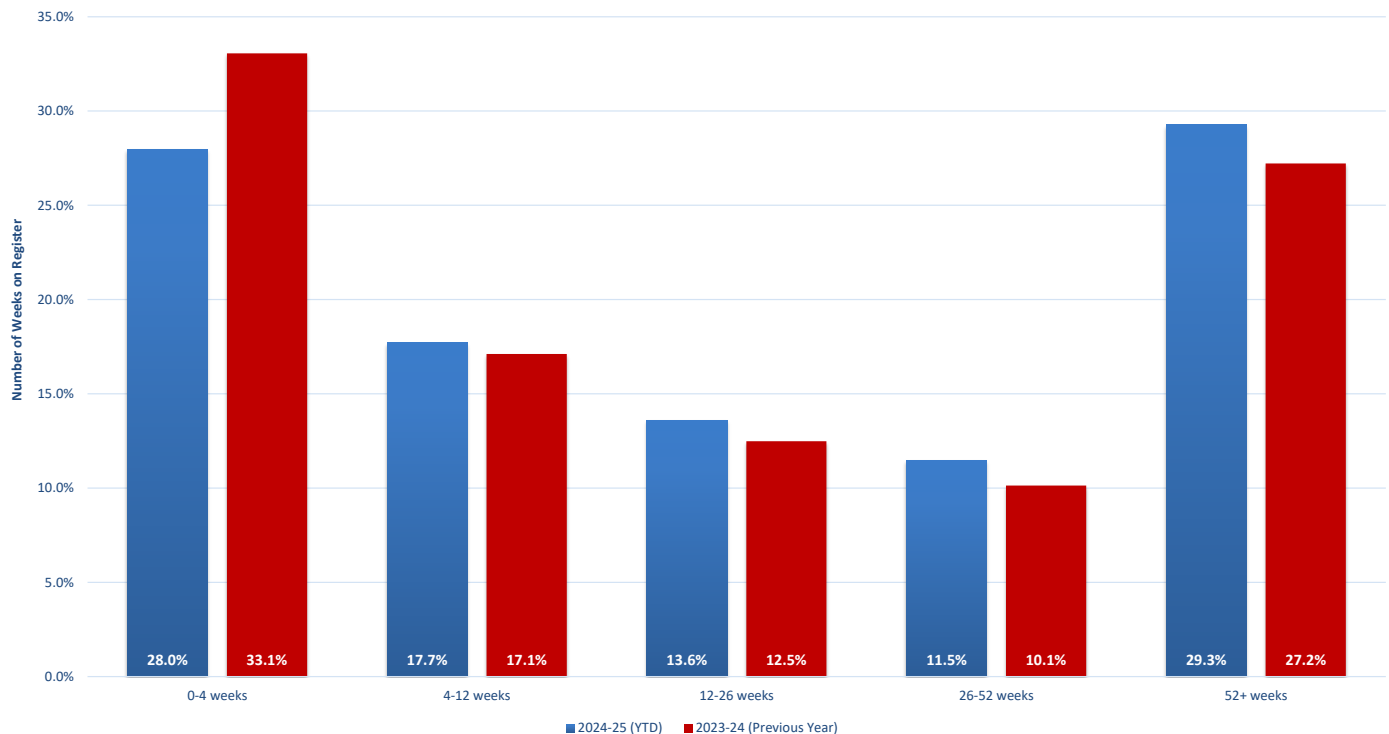
C2.6 Duration of time (in weeks) the patients were on EPaCCS (Leeds)

Duration of time (in weeks) the patients were on EPaCCS by Quarter (as %age of Total)



Duration of time (in weeks) the patients were on EPaCCS (as %age of Total)

2024-25 (YTD) vs 2023-24 (Previous Year)

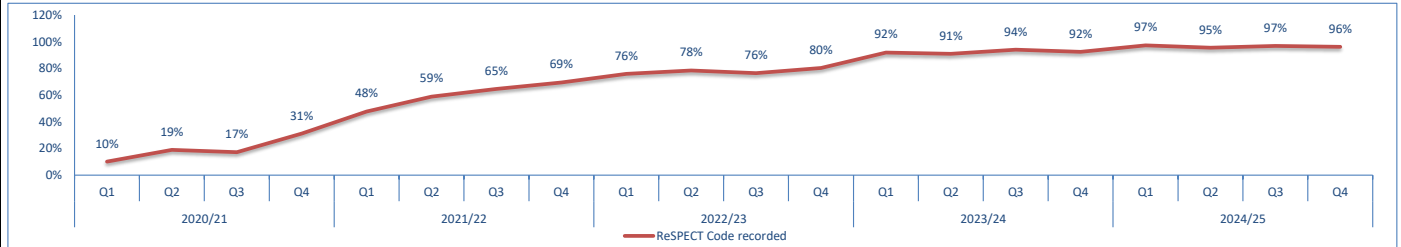


Part 2 - Leeds Health & Care Partnership EoL Data 2024-25 Report (Q1-Q4)

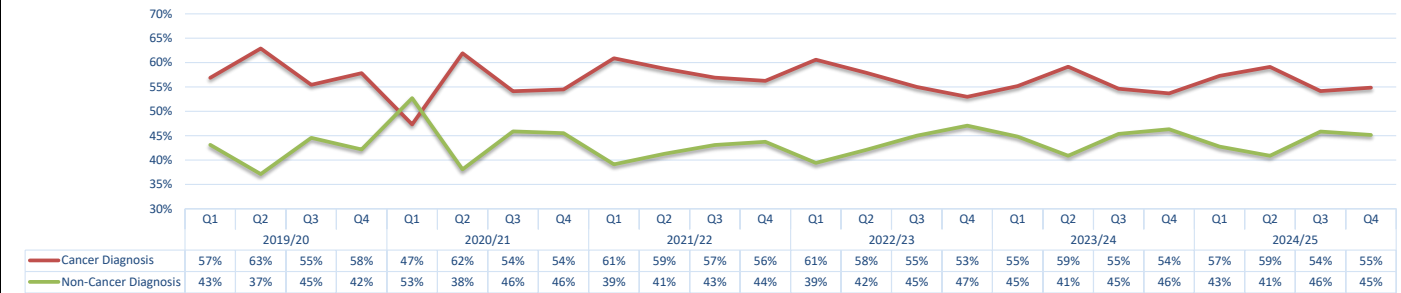
C2.7 Deceased EPaCCS patients who have ReSPECT (Recommended Summary Plan for Emergency Care and Treatment) Code recorded on the system.

Note: 2023-24 onwards data has been enhanced using the ReSPECT data received from Leeds Teaching Hospital PPM+

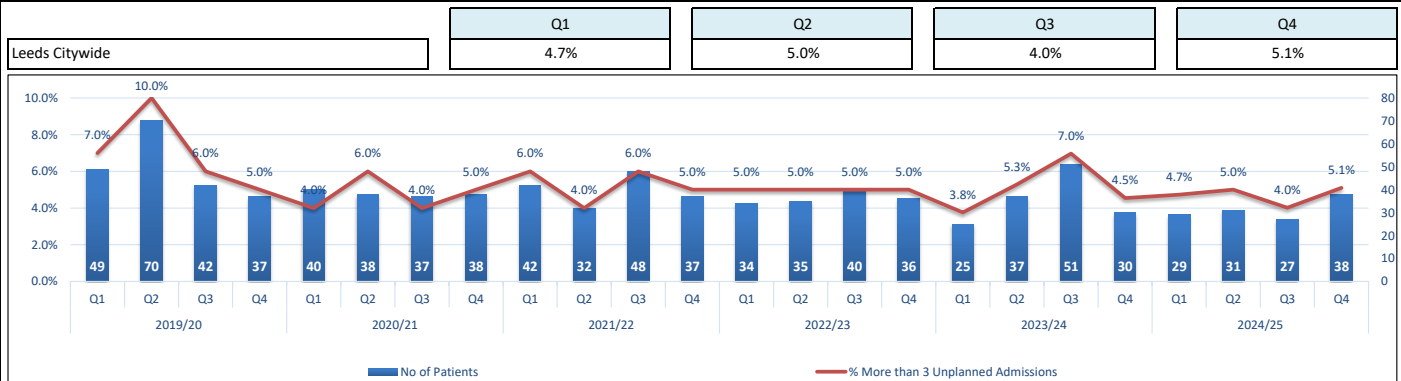
Patients with ReSPECT Code	Q1		Q2		Q3		Q4	
ReSPECT Code recorded	596	97%	591	95%	651	97%	722	96%
ReSPECT Code not recorded	17	3%	28	5%	21	3%	29	4%
Total	613		619		672		751	



C2.8 Patients with a Cancer Diagnosis recorded at any point in life.



C2.9 Percentage of deceased EPaCCS patients with 3 or more Unplanned Admissions (Non-Elective Inpatient) in the last 90 days of their life.



PCN	Q1	Q2	Q3	Q4
Leeds Citywide	4.7%	5.0%	4.0%	5.1%
Armley PCN	8%	13%	13%	0%
Beeston PCN	5%	8%	3%	7%
Bramley, Wortley and Middleton PCN	0%	16%	4%	13%
Burmantofts, Harehills and Richmond Hill PCN	5%	0%	4%	4%
Central North Leeds PCN	4%	4%	4%	0%
Chapelton PCN	5%	0%	8%	8%
Crossgates PCN	3%	3%	5%	2%
Holt Park PCN	11%	7%	0%	7%
LS25 / LS26 PCN	3%	8%	4%	2%
LSMP & The Light	0%	0%	0%	0%
Middleton and Hunslet PCN	3%	5%	0%	4%
Morley and District PCN	4%	2%	2%	5%
Otley PCN	8%	7%	0%	7%
Seacroft PCN	3%	3%	3%	6%
West Leeds PCN	4%	6%	12%	3%
Wetherby PCN	12%	5%	5%	13%
Woodsley PCN	4%	3%	0%	2%
Yeadon PCN	8%	4%	0%	5%
York Road PCN	3%	0%	3%	0%

Part 2 - Leeds Clinical Commissioning Group (CCG) EPaCCS Data 2024-25 Report (Q1-Q4)

C2.10 Unplanned hospital usage (A&E and Non-Elective Admissions) by EPaCCS Patients in the last 90 days of their life.

Please note that the data below only relates to patients who have died in a particular quarter and looking back 90 days from their respective date of death.

The actual hospital visits/admissions could have taken place in a previous quarter i.e. a patient who died on 01 April 2024 may have accessed the hospital between Jan to Mar 2024

Activity and Cost Breakdown

	Q1		Q2		Q3		Q4		Total	
A&E visits	Activity	Cost	Activity	Cost	Activity	Cost	Activity	Cost	Activity	Cost
Unique Patients	311		340		368		373		1392	
Total Activity and Cost	470	£121,615	536	£144,633	534	£146,292	577	£155,041	2117	£567,581
Average Activity and Cost	1.5	£391	1.6	£425	1.5	£398	1.5	£416	1.5	£408
Planned Admissions (EL)	Activity	Cost	Activity	Cost	Activity	Cost	Activity	Cost	Activity	Cost
Unique Patients	14		18		12		22		66	
Total Activity and Cost	15	£51,119	20	£75,172	15	£80,277	24	£87,445	74	£294,013
Average Activity and Cost	1.1	£3,651.36	1.1	£4,176.22	1.3	£6,689.75	1.1	£3,974.77	1.1	£4,455
Unplanned Admissions (NEL)	Activity	Cost	Activity	Cost	Activity	Cost	Activity	Cost	Activity	Cost
Unique Patients	349		377		370		398		1494	
Total Activity and Cost	501	£2,308,104	554	£2,614,916	530	£2,730,979	599	£3,036,765	2184	£10,690,764
Average Activity and Cost	1.4	£6,613	1.5	£6,936	1.4	£7,381	1.5	£7,630	1.5	£7,156

Average and Median Number of Hospital Inpatient bed days/person in last 90 days of life

	Q1		Q2		Q3		Q4	
Total Bed Days Elective	86		160		195		160	
Total Bed Days Non-Elective	5742		6818		6858		6737	
Total	5828		6978		7053		6897	
	Average	Median	Average	Median	Average	Median	Average	Median
Elective Admissions	6.1	2.5	8.9	4.0	16.3	10.0	7.3	5.5
Non-Elective Admissions	16.5	12.0	18.1	12.0	18.5	14.0	16.9	12.0
All Inpatient Admissions	16.4	12.0	18.2	13.0	19.0	14.0	17.1	13.0

Length of Stay Breakdown for Unplanned Admissions (Non-Elective Inpatient)

	Q1	Q2	Q3	Q4	Total
Length of Stay (Unplanned Admissions)	No. of Admissions	No. of Admissions	No. of Admissions	No. of Admissions	No. of Admissions
0 Days	19	31	27	37	114
1-5 Days	178	191	173	212	754
6-10 Days	114	122	106	126	468
11-15 Days	65	67	57	79	268
16-20 Days	46	48	44	44	182
21-47 Days	69	76	108	89	342
48+ Days	10	19	15	12	56
	501	554	530	599	2184

