

Leeds Planning Ahead Report (End of Life)

Leeds Health & Care Partnership

2025-26 Report (Q2) - Leeds Citywide

Data Source :            SystmOne and EMIS

Data Provided by :     Leeds Community Healthcare, St Gemma's Hospice, Sue Ryder Wheatfields Hospice and Public Health Leeds (Integrated Digital Services)

Report Compiled by :   Business Intelligence Team, Leeds Office of the ICB

	<b>Page</b>
<b>Summary</b>	<b>3</b>
<b>Part 1 - GP Practice EoL Data</b>	
C1.1a Patients who died and were included on EPaCCS in Leeds, breakdown by PCN (Part 1 of 2)	4
C1.1b Patients who died and were included on EPaCCS in Leeds, breakdown by PCN (Part 2 of 2)	5
C1.2a Percentage of Patients on EPaCCS who have achieved Preferred Place of Death in Leeds, breakdown by PCN (Part 1 of 2)	6
C1.2b Percentage of Patients on EPaCCS who have achieved Preferred Place of Death in Leeds, breakdown by PCN (Part 2 of 2)	7
<b>Part 2 - Leeds City EoL Data</b>	
C2.1 Total patient deaths in and out of hospital and total deaths by	8
C2.2 Patients who died and were included on EPaCCS	8
C2.3 Preferred place of death recorded	9
C2.4 Actual place of death recorded	9
C2.5 Preferred Place of Death Achieved (First Choice) by patients	10
C2.6 Duration of time (in weeks) the patients were on EPaCCS (Leeds)	11
C2.7 Deceased EPaCCS patients who have ReSPECT (Recommended Summary Plan for Emergency Care and Treatment) Code recorded on the system.	12
C2.8 Percentage of deceased EPaCCS patients with 3 or more Unplanned Admissions (Non-Elective Inpatient) in the last 90 days of their life.	12

### Leeds Planning Ahead Report (End of Life)

The Electronic Palliative Care Coordination System (EPaCCS) is an electronic record that supports advance care planning conversations and improves the coordination of care for people approaching the end of life.

It provides a summary of key recommendations, preferences and information essential to the high quality care for patients with palliative care needs and those choosing to plan ahead, irrespective of prognosis. Local and national data shows that when patients are given the opportunity to discuss and share their preferences they are more likely to achieve their end of life care goals.

This is a 2025-26 (Q1-Q2) Leeds Planning Ahead Report report, combining SystmOne and EMIS data for patients registered from all the practices across Leeds.

To ensure a comprehensive view of advance care planning it collates EPaCCS data entered by all relevant care providers: Leeds Community Healthcare community services, hospice services, community palliative care teams in addition to primary care.

These Leeds Planning Ahead Report (End of Life) reports have been produced to enable you to reflect on end of life care in your practice.

#### Key findings of the 2025-26 Report (Q2) report are:

- ◆ **49%** of adults who died in Leeds had an EPaCCS record, compared with 44.4% in the previous year.  
**(EPaCCS Deaths / All Deaths) 2025-26: Q1 (569/1364), Q2 (630/1284)**  
(EPaCCS Deaths / All Deaths) 2024-25: Q1 (613/1411), Q2 (619/1354), Q3(672/1590) and Q4 (751/1622)
- ◆ **79%** of patients achieved their preferred place of death during the current reporting period, up from 77% the previous year.
  - \* 69% of patients died outside of hospital, compared with 68.8% in the previous year.
- ◆ 50% of patients had their EPaCCS record created more than three months before death, compared with 54% in the previous year.
- ◆ The proportion of patients without a recorded place of death was 19% in the current period, compared with 14% in previous year.
- ◆ Percentage of patients who died with GSF and also had a RESPECT Code recorded on the system:  
**2025-26: Q1 (94%), Q2 (97%)**  
2024-25: Q1 (97%), Q2 (95%), Q3 (97%) and Q4 (96%)
- ◆ Deaths at home recorded in the current reporting period :  
**2025-26: Q1 181 deaths (32%),Q2 167 deaths (27%)**  
2024-25: Q1 213 deaths (29%), Q2 191 deaths (31%), Q3 202 deaths (30%) and Q4 207 deaths (28%)

The findings show that that a greater proportion of people are being given opportunities to discuss , document and share their care preferences at an earlier stage and demonstrate improved data quality.

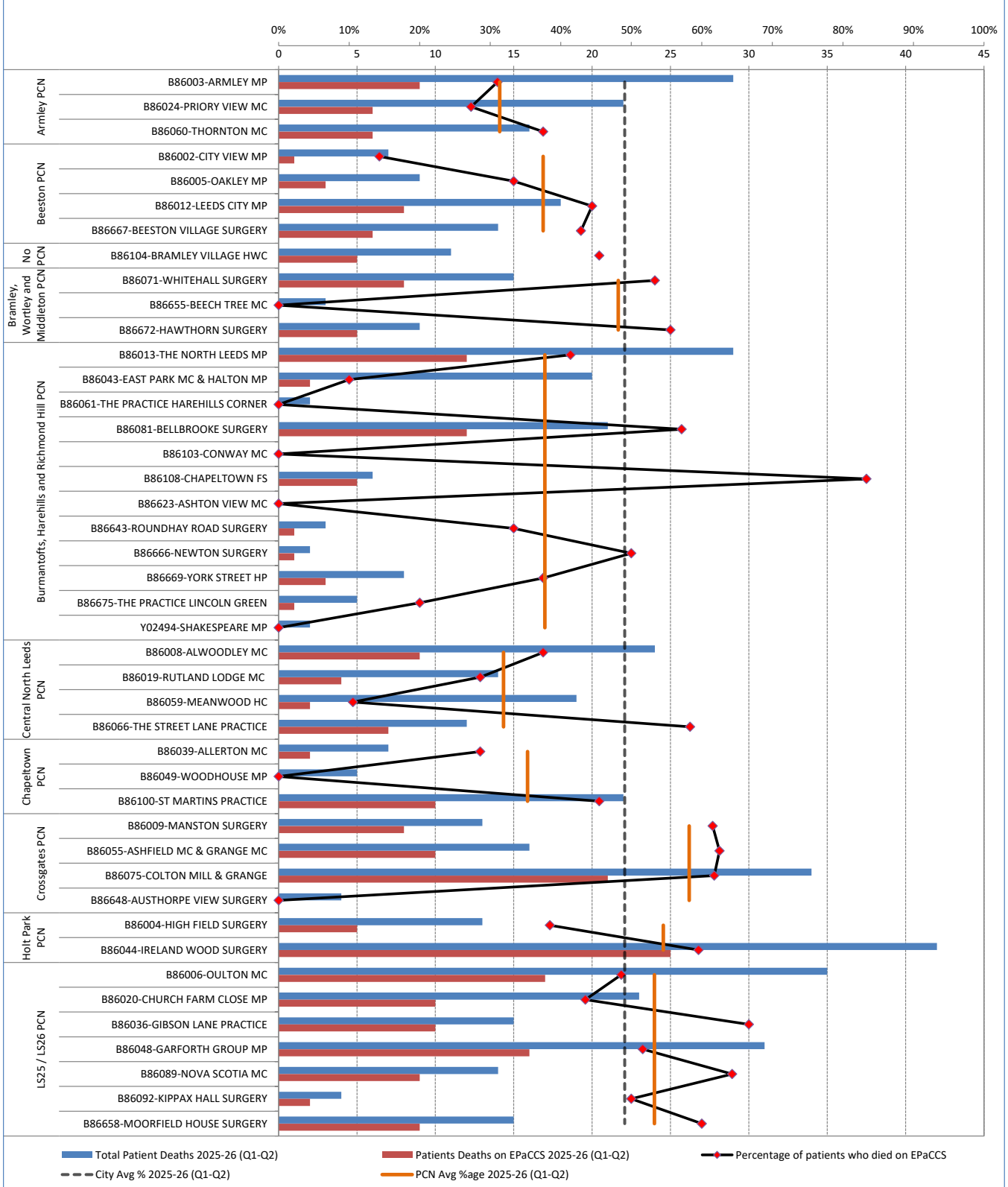
Part 1 - GP Practice EPaCCS Data  
2025-26 Report (Q2)

Leeds Health & Care Partnership

C1.1a Patients who died and were included on EPaCCS in Leeds, breakdown by PCN (Part 1 of 2)

	Q1	Q2	Q3	Q4	Total
a. Number of All patient deaths	1364	1284			2648
b. Number of patients deaths on EPaCCS	569	630			1199
c. % of patient deaths on EPaCCS	42%	49%			45%

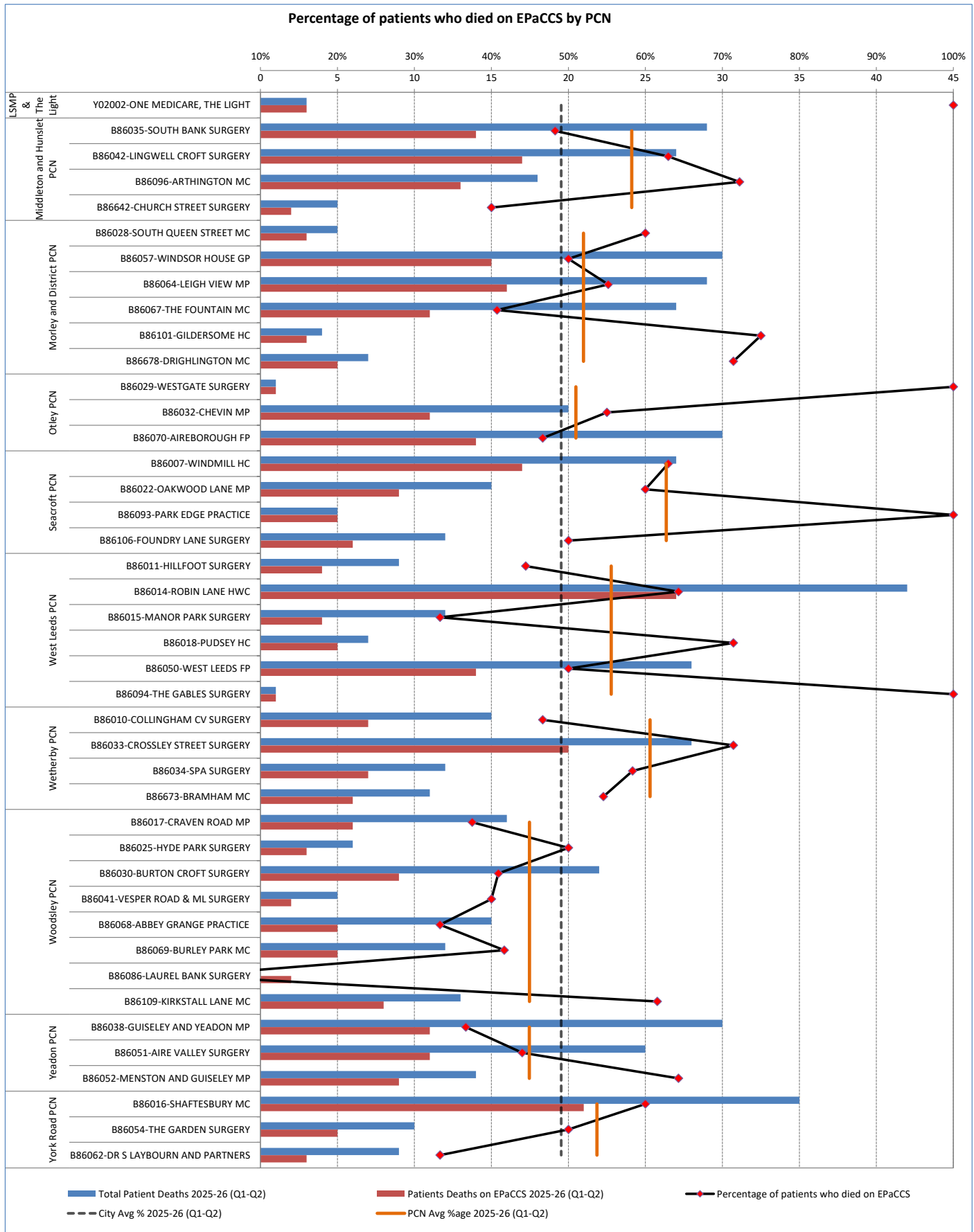
Percentage of patients who died on EPaCCS by PCN



Part 1 - GP Practice EPaCCS Data  
2025-26 Report (Q2)

Leeds Health & Care Partnership

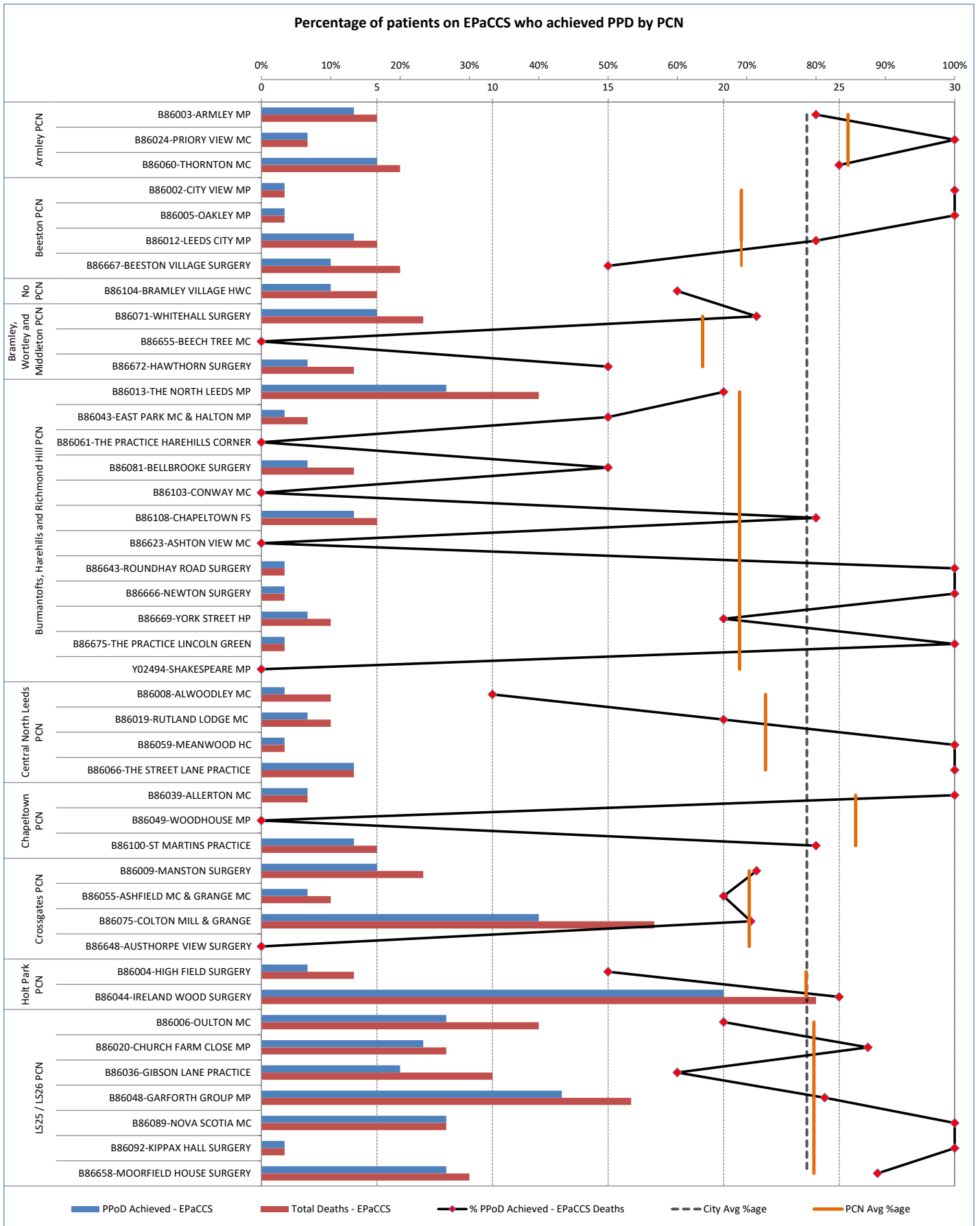
C1.1b Patients who died and were included on EPaCCS in Leeds, breakdown by PCN (Part 2 of 2)



Part 1 - GP Practice EPaCCS Data  
2025-26 Report (Q2)

Leeds Health & Care Partnership

C1.2a Percentage of Patients on EPaCCS who have achieved Preferred Place of Death in Leeds, breakdown by PCN (Part 1 of 2)

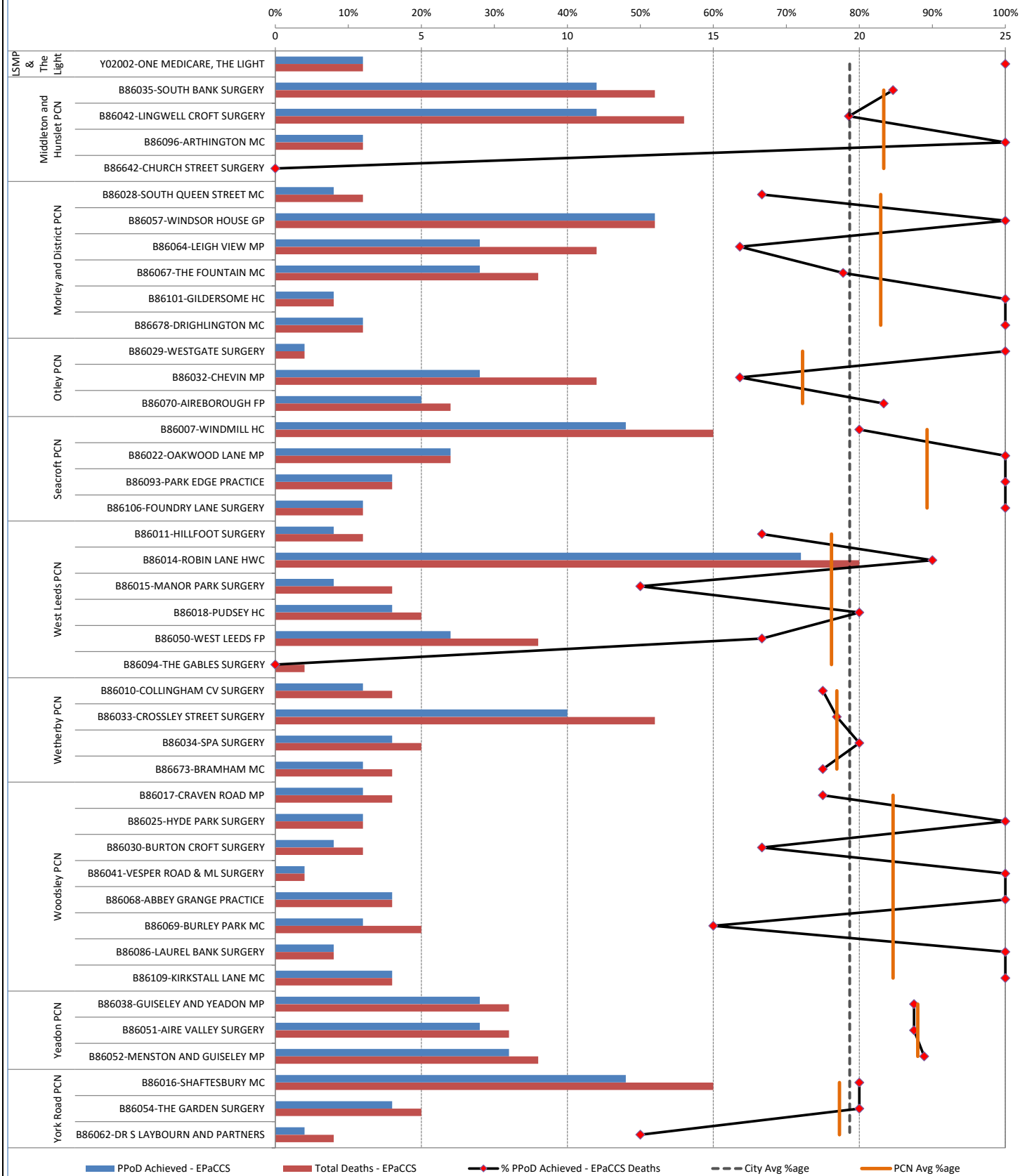


Part 1 - GP Practice EPaCCS Data  
2025-26 Report (Q2)

Leeds Health & Care Partnership

C1.2b Percentage of Patients on EPaCCS who have achieved Preferred Place of Death in Leeds, breakdown by PCN (Part 2 of 2)

Percentage of patients on EPaCCS who achieved PPD by PCN

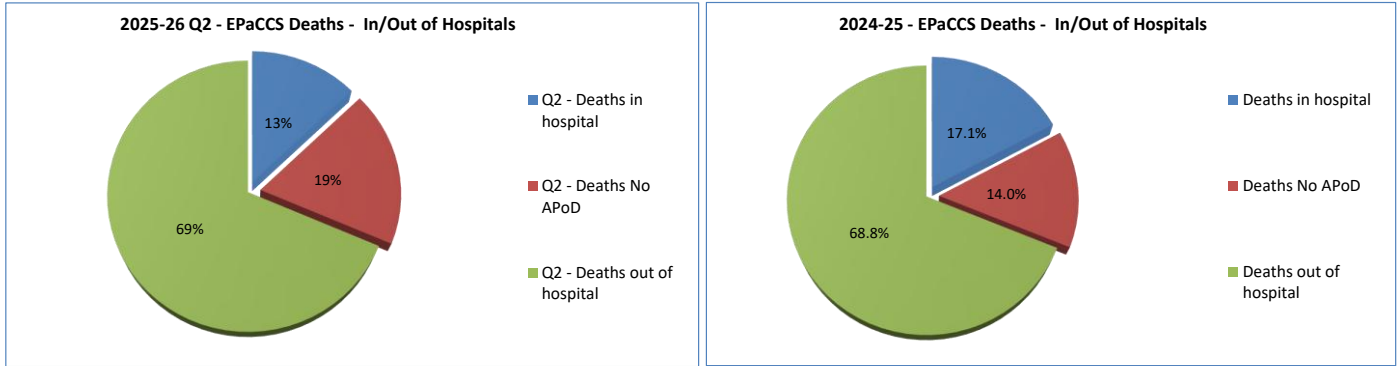


## Part 2 - Leeds Health & Care Partnership EoL Data 2025-26 Report (Q2)

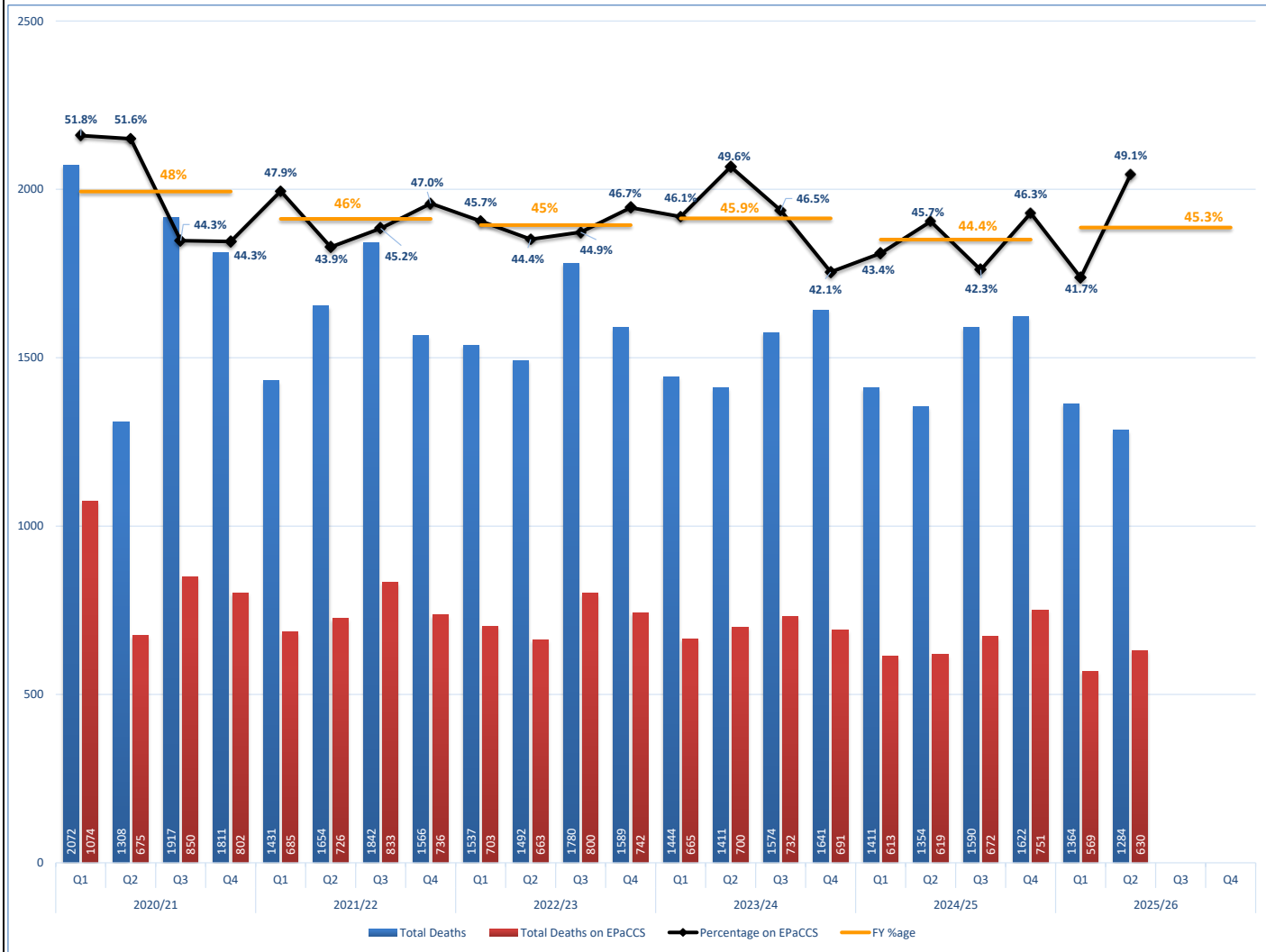
### C.1 Total patient deaths in and out of hospital and total deaths by

	Q1		Q2		Q3		Q4		Total	
	Count	%	Count	%	Count	%	Count	%	Count	%
1. Total deaths in hospital?	72	13%	81	13%					153	13%
2. Total deaths out of hospital?	412	72%	432	69%					844	70%
3. Total number of deaths with No APoD	85	15%	117	19%					202	17%
4. Total number of deaths in Leeds	All	EPaCCS	All	EPaCCS	All	EPaCCS	All	EPaCCS	All	EPaCCS
	1364	569	1284	630					2648	1199

Percentage deaths in hospital / out of hospital for 2025-26 Report (Q2) compared with previous year.



### C.2 Patients who died and were included on EPaCCS

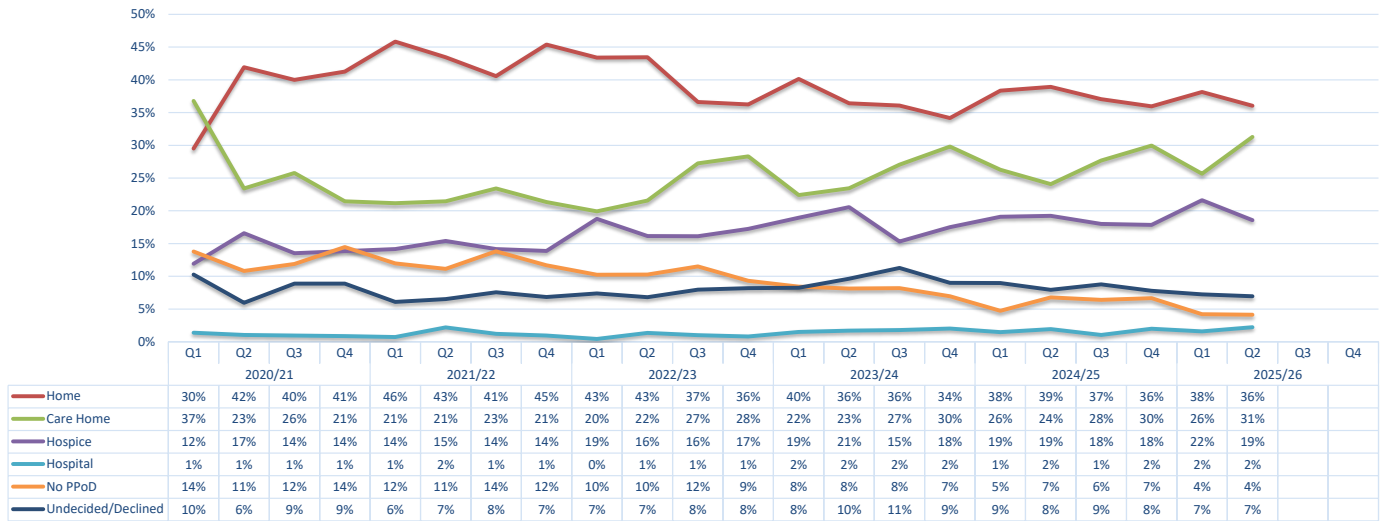


**Part 2 - Leeds Health & Care Partnership EoL Data  
2025-26 Report (Q2)**

**C2.3 Preferred place of death recorded**

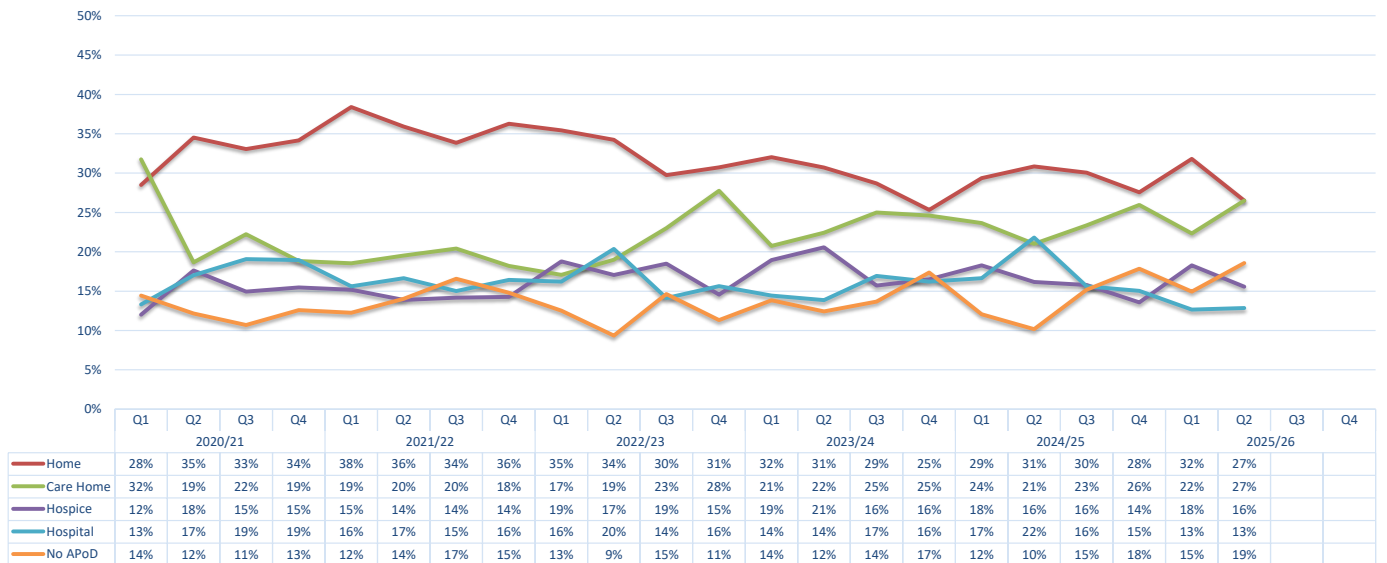
**Note: Preferred and Actual place of death data is from S1/EMIS.**

		Leeds Health & Care Partnership															
	Preferred Place of Death	Q1				Q2				Q3				Q4			
1	Care Home	146				197											
2	Home	217				227											
3	Hospice	123				117											
4	Hospital	9				14											
5	No PPoD (preferred place of death)	24				26											
6	Undecided/Declined	50				49											
	<b>Total</b>	<b>569</b>				<b>630</b>											



**C2.4 Actual place of death recorded**

		Leeds Health & Care Partnership															
	Actual Place of Death	Q1				Q2				Q3				Q4			
1	Care Home	127				167											
2	Home	181				167											
3	Hospice	104				98											
4	Hospital	72				81											
5	No APoD (actual place of death)	85				117											
6	Other	0				0											
	<b>Total</b>	<b>569</b>				<b>630</b>											



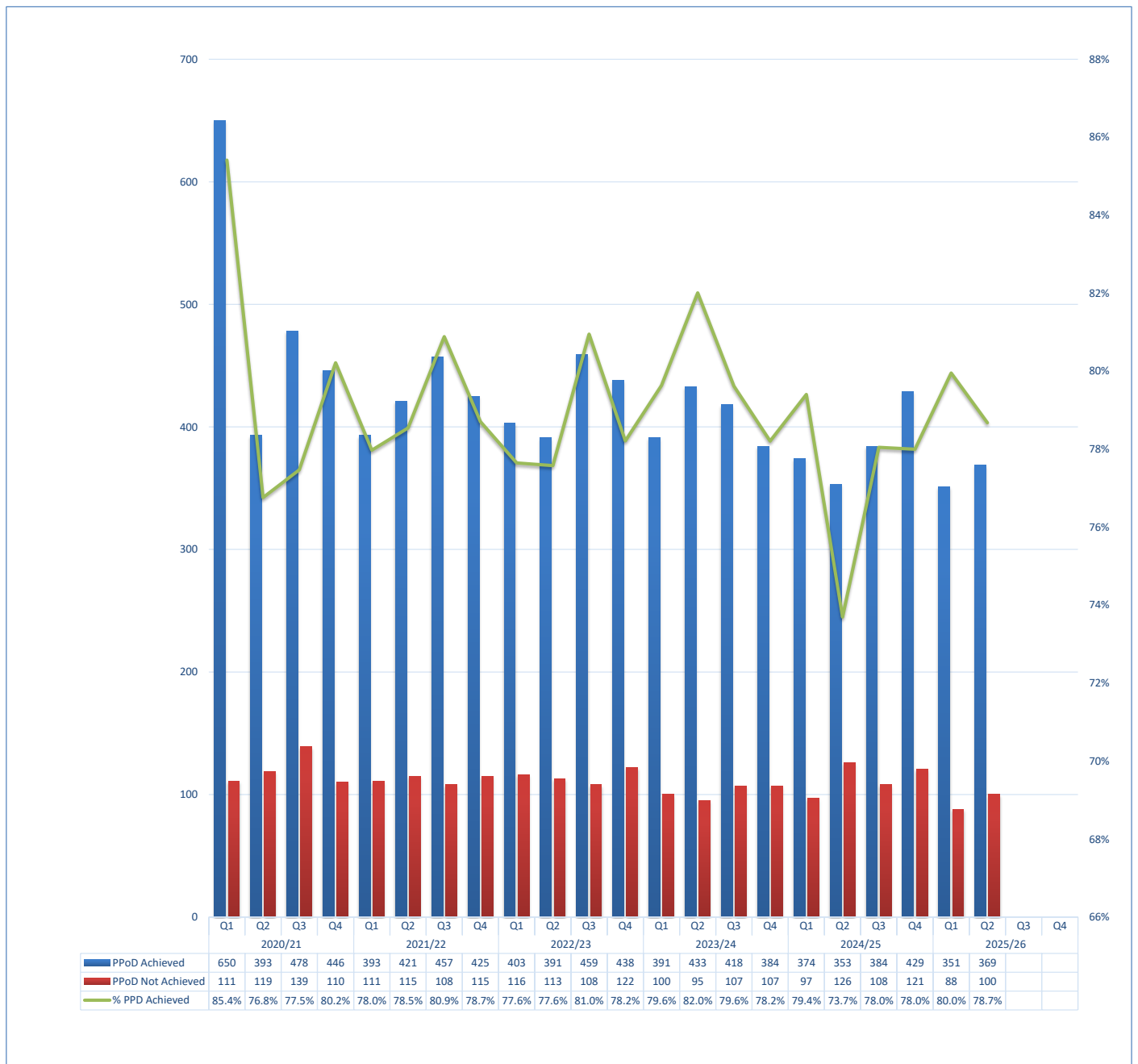
**Part 2 - Leeds Health & Care Partnership EoL Data  
2025-26 Report (Q2)**

C2.5 Preferred Place of Death Achieved (First Choice) by patients

	Qtr	PPoD Achieved	PPoD Not Achieved	% PPD Achieved
Leeds Health & Care Partnership	Q1	351	88	80.0%
	Q2	369	100	78.7%
	Q3			
	Q4			
	<b>Total</b>	<b>720</b>	<b>188</b>	<b>79.3%</b>

*NOTE: Only patients with both PPoD and APoD recorded are included in this analysis*

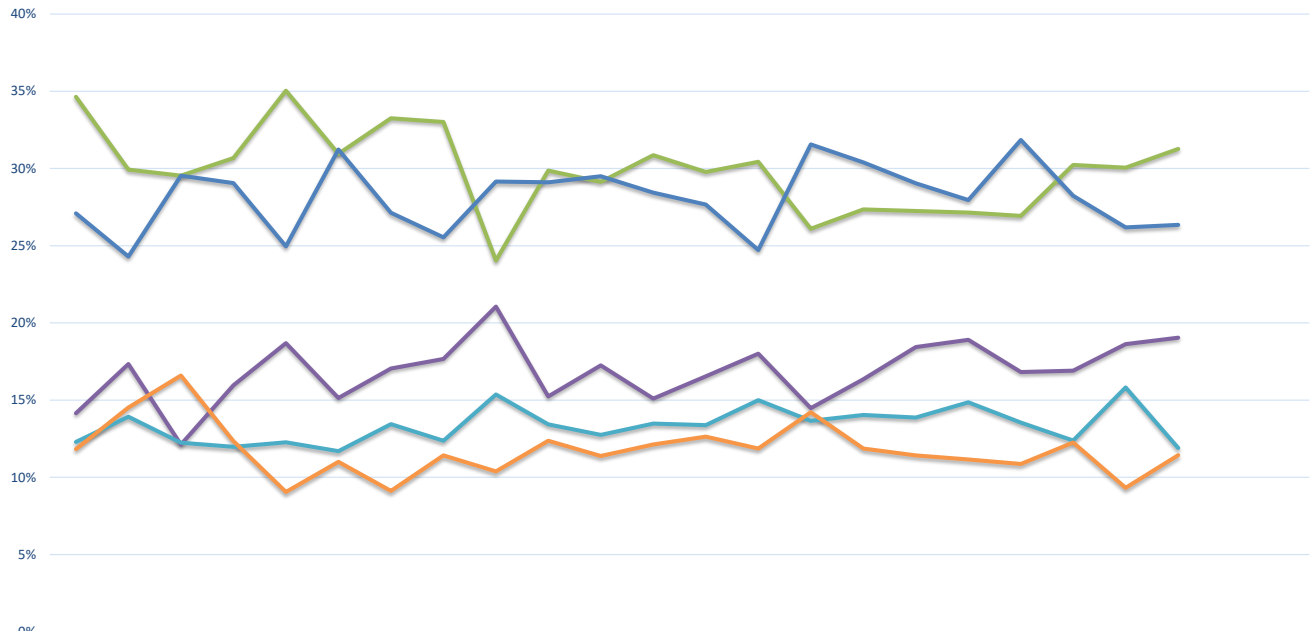
**Preferred Place of Death (First Choice) Achieved by patients**



**Part 2 - Leeds Health & Care Partnership EoL Data  
2025-26 Report (Q2)**

**C2.6 Duration of time (in weeks) the patients were on EPaCCS (Leeds)**

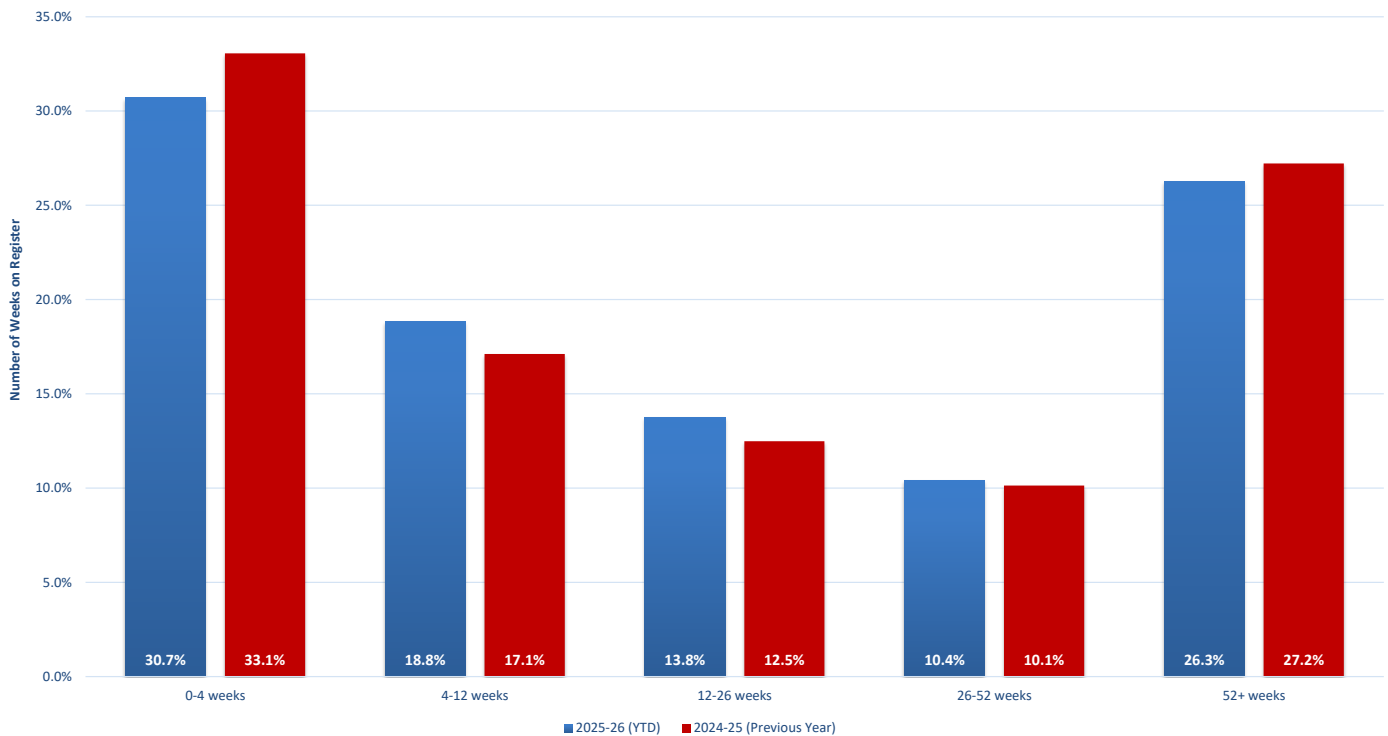
**Duration of time (in weeks) the patients were on EPaCCS by Quarter (as %age of Total)**



	Q1	Q2	Q3	Q4	Q1	Q2	Q3	Q4	Q1	Q2	Q3	Q4	Q1	Q2	Q3	Q4	Q1	Q2	Q3	Q4	Q1	Q2	Q3	Q4
	2020/21				2021/22				2022/23				2023/24				2024/25				2025/26			
0-4 weeks	35%	30%	30%	31%	35%	31%	33%	33%	24%	30%	29%	31%	30%	30%	26%	27%	27%	27%	27%	30%	30%	31%		
4-12 weeks	14%	17%	12%	16%	19%	15%	17%	18%	21%	15%	17%	15%	17%	18%	14%	16%	18%	19%	17%	17%	19%	19%		
12-26 weeks	12%	14%	12%	12%	12%	12%	13%	12%	15%	13%	13%	13%	13%	15%	14%	14%	14%	15%	14%	12%	16%	12%		
26-52 weeks	12%	15%	17%	12%	9%	11%	9%	11%	10%	12%	11%	12%	13%	12%	14%	12%	11%	11%	11%	12%	9%	11%		
52+ weeks	27%	24%	30%	29%	25%	31%	27%	26%	29%	29%	30%	28%	28%	25%	32%	30%	29%	28%	32%	28%	26%	26%		

**Duration of time (in weeks) the patients were on EPaCCS (as %age of Total)**

**2025-26 (YTD) vs 2024-25 (Previous Year)**

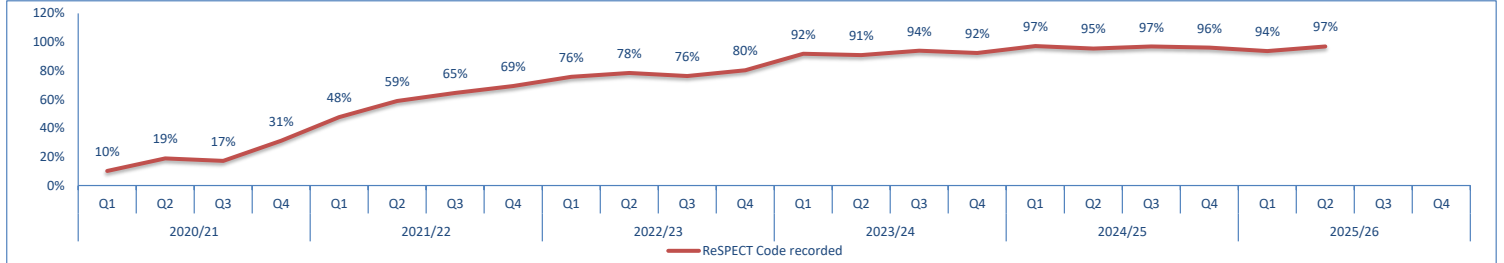


## Part 2 - Leeds Health & Care Partnership EoL Data 2025-26 Report (Q2)

C2.7 Deceased EPaCCS patients who have ReSPECT (Recommended Summary Plan for Emergency Care and Treatment) Code recorded on the system.

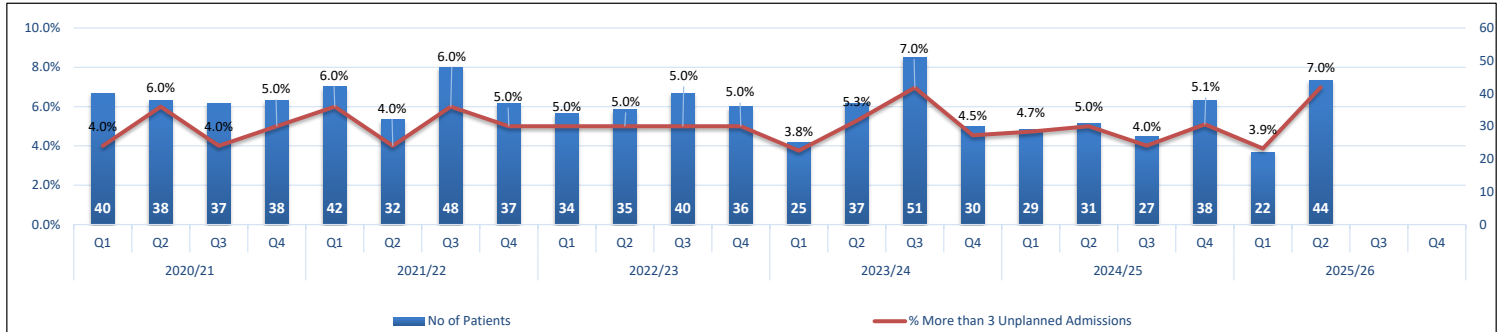
*Note: 2023-24 onwards data has been enhanced using the ReSPECT data received from Leeds Teaching Hospital PPM+*

Patients with ReSPECT Code	Q1		Q2		Q3		Q4	
ReSPECT Code recorded	533	94%	611	97%				
ReSPECT Code not recorded	36	6%	19	3%				
<b>Total</b>	<b>569</b>		<b>630</b>					



C2.8 Percentage of deceased EPaCCS patients with 3 or more Unplanned Admissions (Non-Elective Inpatient) in the last 90 days of their life.

Leeds Citywide	Q1	Q2	Q3	Q4
	3.9%	7.0%		



PCN	Q1	Q2	Q3	Q4
Armley PCN	0%	14%		
Beeston PCN	4%	11%		
Bramley, Wortley and Middleton PCN	0%	0%		
Burmantofts, Harehills and Richmond Hill PCN	6%	3%		
Central North Leeds PCN	5%	5%		
Chapeltown PCN	0%	0%		
Crossgates PCN	0%	15%		
Holt Park PCN	0%	13%		
LS25 / LS26 PCN	2%	8%		
LSMP & The Light	0%	33%		
Middleton and Hunslet PCN	0%	2%		
Morley and District PCN	6%	9%		
Otley PCN	5%	4%		
Seacroft PCN	3%	0%		
West Leeds PCN	2%	2%		
Wetherby PCN	11%	5%		
Woodsley PCN	4%	10%		
Yeadon PCN	0%	3%		
York Road PCN	13%	17%		